



evor

evor

works and lives in Nantes/France
mobile: +33 6 17 92 02 30
forevor@free.fr - <http://www.evor.fr>
instagram: evorism

SOLO EXHIBITIONS (selection)

- 2018 «Jungle intérieure» - Voyage à Nantes+SEVE - Nantes, France
«Delta runspace» - Tourcoing, France
«Fatales colifichets» - La Vallée - Brussels, Belgium
- 2017 «Au 5ème» - Nantes, France
- 2014 «Caprices» - galerie 5 - Angers, France
«Mascarades obsessions» - Printemps Haussmann - Paris, France
- 2013 «Fortresses» - The Artists Club Coffre-fort - Brussels, Belgium
- 2012 «Mascarade New York», Le Petit Versailles - New York, USA
- 2010 «Lyre» - galerie Mélanie Rio - Nantes, France
«Orée» - centre culturel Apollo - Mazamet, France
- 2009 «Mascarade Berlin» - Studio 54 - Berlin, Germany
«Armada» - le lieu unique - Nantes, France
- 2007 «Focalises» - Le Péristyle, Muséum d'histoire naturelle - Nantes, France

GROUP EXHIBITIONS (selection)

- 2018 «Particules» - L'Atelier - Voyages à Nantes - Nantes, France
«Organ Icon» - QSP/BAR - Roubaix, France
«Hors piste» La Montagne - OFF officiel Art Brussels, Brussels, Belgium
- 2017 «Pharmakon1» - Kyoto, Japan
«Pharmakon2» - Osaka, Japan
«Doloris» - Fragile - Nantes, France
«Kintsughi» - galerie Mansart - Paris, France
«Process Youpi» - Station Services + Maison du Développement Durable - Rezé, France
- 2016 «YIA art fair» - Carreau du Temple - Paris, France
Exposition inaugurale du Centre d'art international de Tucheng, Zunyi - China
- 2015 «Carte de séjour» - galerie GONGDOSA - Art Hall GONG, Séoul, South Korea
«SVMS 2» - Ministère de la Culture - Paris, France
«Décembre» - galerie Mansart - Paris, France
«Des artistes chez l'habitant» - Fiac, France
«Nuit blanche Mayenne» - Mayenne, France
«Les coffres forts» - Art Brussels + The artists Club Coffre Fort - Brussels, Belgium
«Acquisitions 2014 de l'Arthotèque d'Angers» - Musée des Beaux-Arts d'Angers - Angers, France
«Adopt it» - galerie Mansart - Paris, France
«SVMS 1» - Musée Roland Garros - Paris, France
2014 «Plant it» - galerie Mansart - Paris, France
«La Collection» - galerie Mélanie Rio - Nantes, France
«Sonitus Perteget Silentium Malleis» - Ateliers Mille feuilles - Nantes, France

- 2013 «Le grand déballage» - galerie Mélanie Rio - Nantes, France
«Hluhu Kefy, Kladiva Ticho - Ateliers Mille feuilles - Nantes, France
«Reef» - galerie Mélanie Rio - Nantes, France
«Talents à la carte» - Salon Maison & objets - Paris, France
«Art Paris art fair» galerie Mélanie Rio - Le Grand Palais - Paris, France
«Dead Cities» - galerie Mélanie Rio - Nantes, France
«Multiples» - E.S.B.A.N.M. , France
- 2011 «Archiculture» - Ecole d'architecture de Nantes, France
«Le Dégoût du Temple» - Le Temple du Goût - Nantes, France
- 2010 «Chic Art Fair» - Cité de la mode et du design - Paris, France
«Bilboquet» - Prix de la ville de Nantes - Nantes, France
- 2009 «Shoulder of Pork and Ham» - Montreal, Canada
«Polarité» - galerie Mélanie Rio - Nantes, France

RESIDENCIES (selection)

- 2018 résidence à La Vallée - Brussels, Belgium
- 2017 Micro résidence à Station Service recyclerie - Rezé, France
- 2016 Résidence de création à Zunyi - China
- 2015 «Interactions hôte-pathogène» - IRSUN + Lokotoro - Nantes, France
«Des artistes chez l'habitant» - Fiac, France
- 2013 Résidence Springboard For Artists - Barcelone, Espagne
Résidence de création au CHU d'Angers, France
- 2012 «Surrender Dorothy» - Le petit Versailles - New York, USA
«Mascarades» - New York / Brussels
- 2011 «Mascarades» - Berlin / Leipzig / Prague
- 2009 Résidence au lieu unique - Nantes, France
«Secret Garden» - Mazamet, France
«Collège Talence» - Nantes, France
«Collège René Guy Cadou» - Saint Brévin - France

STUDIES

- 2000 Diplôme National Supérieur d'Expression Plastique/DESIGN with the congratulation of the jury - ESBANM
- 1999 Diplôme National Supérieur d'Expression Plastique/ART - ESBANM

TEACHING & WORKSHOPS

- 2014/15 Art teacher at Ecole des Beaux Arts de Nantes(ESBANM) - Nantes, France
- 2011/15 Art teacher at art School of la Roche sur Yon, France
- 2001/16 Visual Arts Workshops professor for schools collège René Guy Cadou St Brévin, collège Talense Nantes, collège Marcel Pagnol de Mazamet, collège Paul Langevin
Cultural mediator, missions for the F.R.A.C. des Pays de la Loire, l'E.S.B.A.N.M., Le lieu unique scène nationale.
Professional aptitude certificate from the Regional Direction of Cultural Affairs of Pays de la Loire
- 2012/2018 Workshops «Arts Vacances» for the townhall of la Roche sur Yon

CURATORING

- 2018 Particules, exposition collective, L'atelier espace culturel ville de Nantes, France
- 2011 Le dégoût du temple, au Temple du goût - Nantes, France
<http://ledegoutdutemple.blogspot.com/>
- 2007 Le goût du temple, au Temple du goût - Nantes, France

AWARDS & PUBLIC COMMISSIONS...

- 2016 Acquisition for the Permanent collection of the International Art Center in Tucheng, Zunyi - China
- 2015 Pre-selection for the 1% of Pont Château college
- 2014 Acquisition Artothèque d'Angers
Grant - Drac des Pays de la Loire
Grant - Région des Pays de la Loire
Recycled material from sports - French Ministry of Culture & Communication
- 2012 1% UHEC de la Roche sur Yon - French Ministry of Justice
Acquisition d'œuvre par La Collection / Artothèque de Nantes
- 2011 Scholarship of residency at New York by the Alliance Française
- 2009 Grant for creation - Région des Pays de La Loire
Laureate for the Visual Arts Prize of Nantes
- 2006 Grant for creation - Drac des Pays de la Loire



Temples, 2013 - Plaster and china ink, casted in the print cartridge used by Angers hospital where I did the residency program.



Temples, 2013 - Plaster and china ink, casted in the print cartridge used by Angers hospital where I did the residency program.



Celestial Foods, 2013. Plaster and inks, casted in the meals trays at Angers's hospital where I did the residency program., 11,5x15cm each element, the whole 326x145 cm.
Exhibition view at *Caprices*-gallery 5, Angers France. Acquisition for the Permanent collection of Angers Artothèque.



Celestial Foods, details, 2013. Plaster and inks, casted in the meals trays at Angers's hospital where I did the residency program., 11,5x15cm each element, the whole 326x145 cm.
Exhibition view at gallery 5, Angers. Acquisition for the Permanent collection of Angers Artothèque.



Pupas, 2013 - plaster, inks, iridescent pigments , studio dust - 30x15x8 cm each. Exhibition view at *Caprices*-gallery 5, Angers France.
Entomologists call pupa the larva of dipters insects, at its state between larva and adult insect(imago).



Pupas, 2013 - plaster, inks, iridescent pigments , studio dust - 30x15x8 cm each. Entomologists call pupa the larva of dipters insects, at its state between larva and adult insect(imago).



Reef, 2017 - enamelled earthenware, polyurethane foam - 110x80x10 cm.
Residency exhibition at I.R.S.U.N (Institute of Scientific Research of Nantes University), theme: virus, host/pathogen. Iridescent undulations on a cellular structure with in its center a depigmented lunar subsidence center, evoking an attack or a degeneration of a reef.



Reef, 2017 - enamelled earthenware, polyurethan foam - 110x80x10 cm.
Residency exhibition at I.R.S.U.N (Institute of Scientific Reseach of Nantes Univeristy), thema: virus, host/pathogen.



Calice, 2017 - plastic lampshade, chromed chair leg, waxed earthenware.



Socrate's delicacies, 2018 - painted expanded foam, enamelled earthenware - 30X30X110 cm.
Condemned for impiety and corruption of the youth, Socrate spends his last hours expounding his philosophy and then drinks the «ciguë» (a poisoned drink). The «ciguë» is a toxic plant.
The grounds of it's fresh seeds was the recipe of a lethal poison used in Athens.



Patella Imperialis, 2018 - painted polyurethane foam, enamelled earthenware - 50X60X44 cm environ.
A floral meniscus, like a gleaming sepal protecting a flower bud, shields a (neo) patella of mineral body.





Torsobana, 2018 - painted polyurethane foam, enamelled earthenware
92X44X38 cm environ.

The Ikebana, «the way of flowers» or «the art to make flowers live» is a traditional Japanese art based on floral composition, lines and asymmetry. Amongst other uses, it was practiced by samurais.



Darkarst, 2015 - 186x100 cm

Selected project for Parcours des fontaines of Fontenay Le Comte, fountains in the city.

Darkarst is a quiet totemic presence that invites meditation. It is a meteor in balance on a circular little lake. Four discreet springs fall from this neo-basaltic eroded stone. What could be the virtues or the dangers of these black water if tasted?



Unexpected Rock, 2013 - polyurethan painted foam, painted plaster- 60x50x125 cm



Urticalices, 2011 - painted expanded foam, graphite - 90x50x30 cm



Fortresses, 2011- painted ceramic balls, glue - 100x70x60 cm



Delight, 2011 - painted expanded foam, fabric, chromed nails - 68x66x30 cm



Cystreasure, 2011 - painted expanded foam, glass and crushed glass - 30x30x26 cm



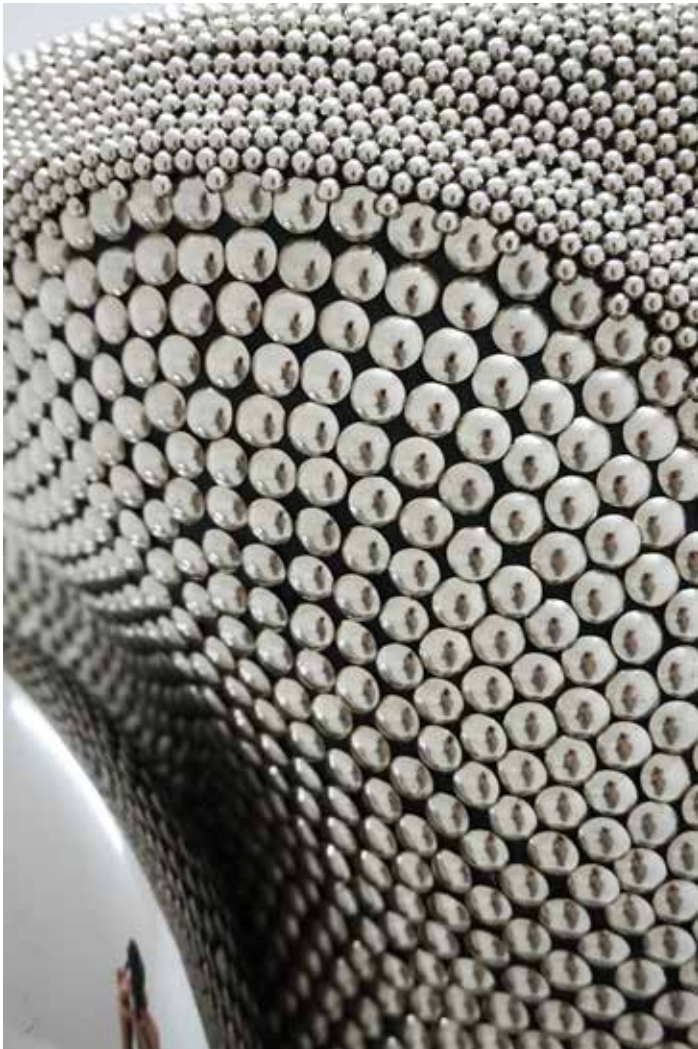
Grenadille, 2010 - 210x68x68 cm



Gym Queens, 2015 - polyurethan bike helmet, ribbons, sequins, chromed nails - 120x30x25 cm.
Commissioned for french Ministry of sports.



Don't explain, don't complain, 2017 - 248x70 cm. Chromed nails and steel, glass, enamelled earthenware.



Don't explain, don't complain, 2017 - 248x70 cm. Chromed nails and steel, glass, enamelled earthenware.



Anema, 2013 - painted polyurethane foam covered with 17000 chromed nails - 40x30x36 cm



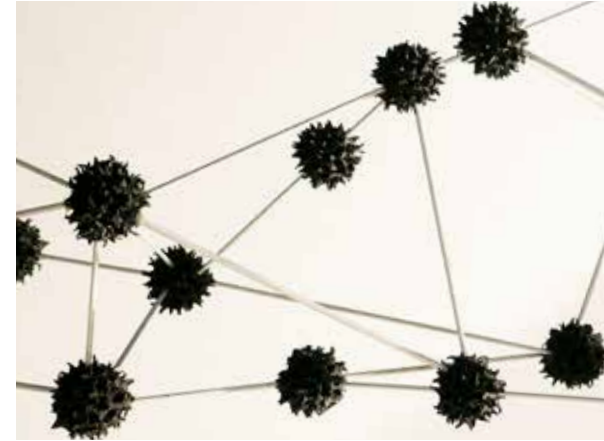
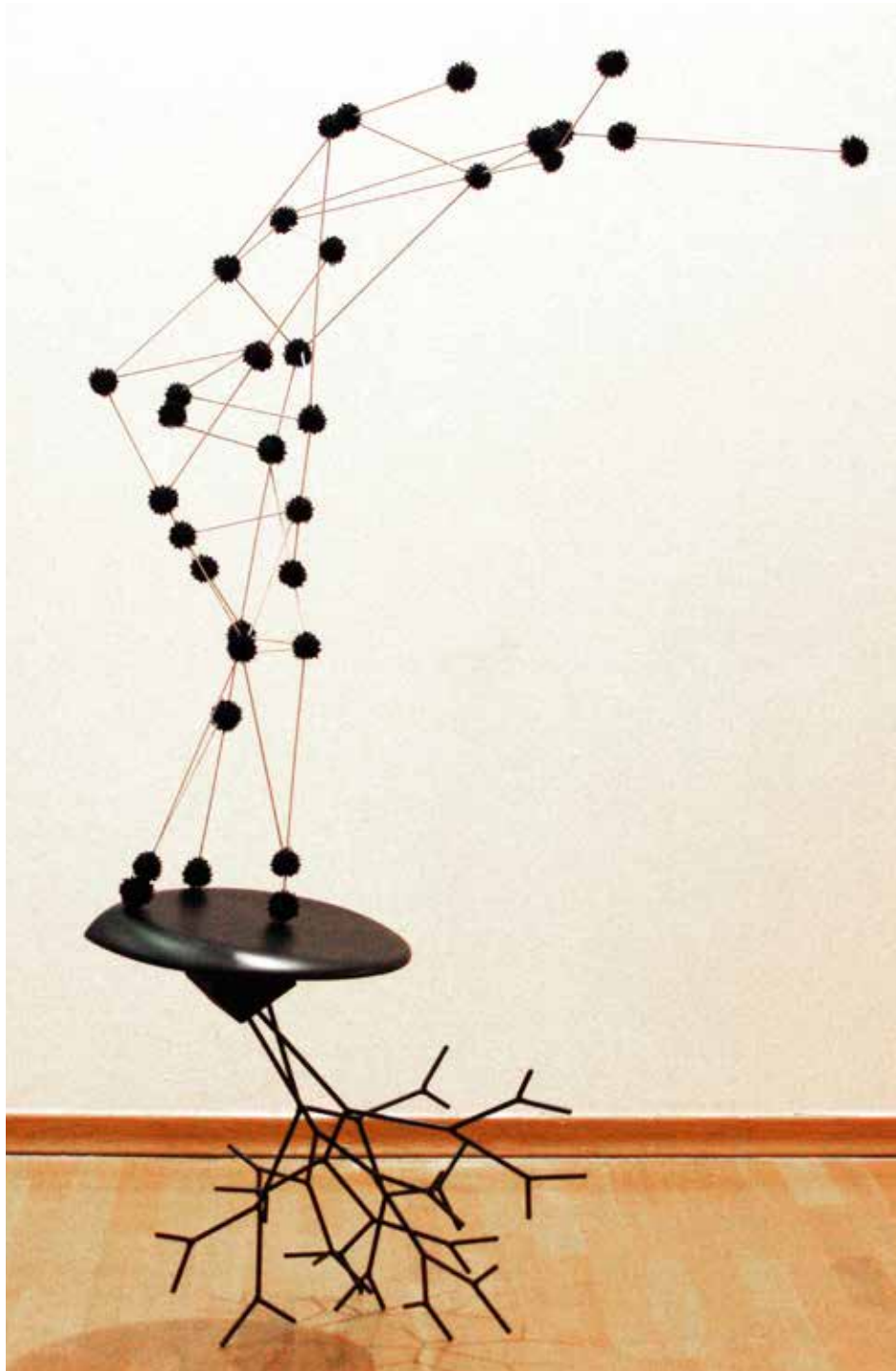
0, 2011 - painted polyurethane foam, chromed nails - 56x54x12 cm



Dorsal, 2013 - painted polyurethane foam covered with chromed nails - 33x35x13 cm



Tessiges, 2015 - painted polyurethane foam with chromed nails, chromed glass - 20x150 cm
Commissioned for «White night» exhibition in the archeologic museum of Mayenne'castle - carolingian palace.

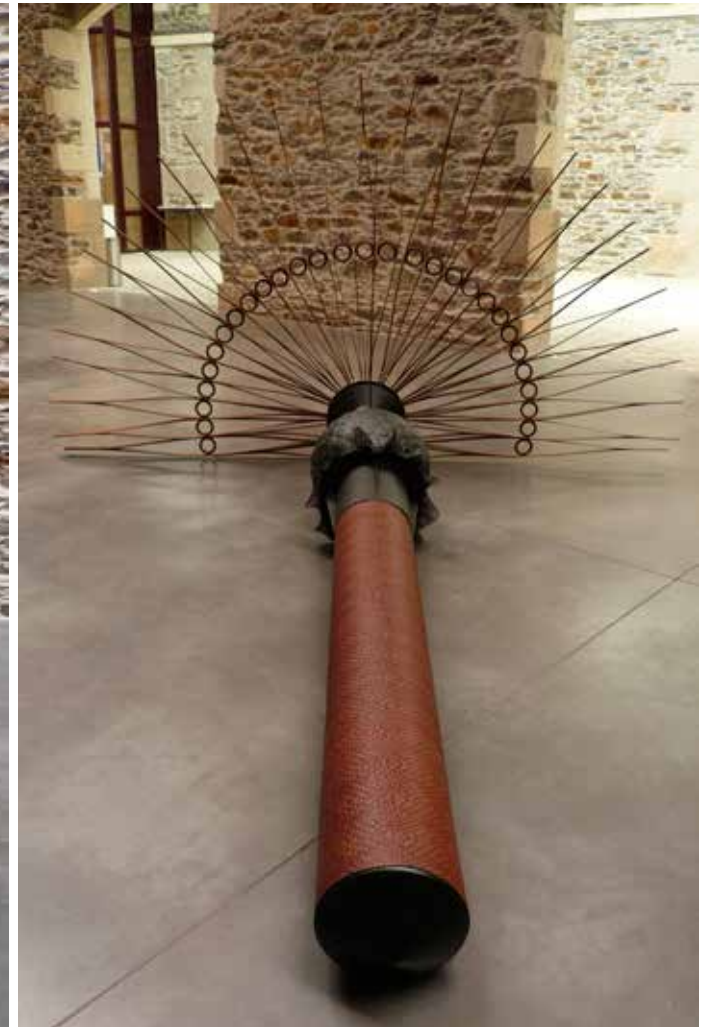


Orée's letter, 2010 - metal, wood, seeds, painting - 50x90x150 cm

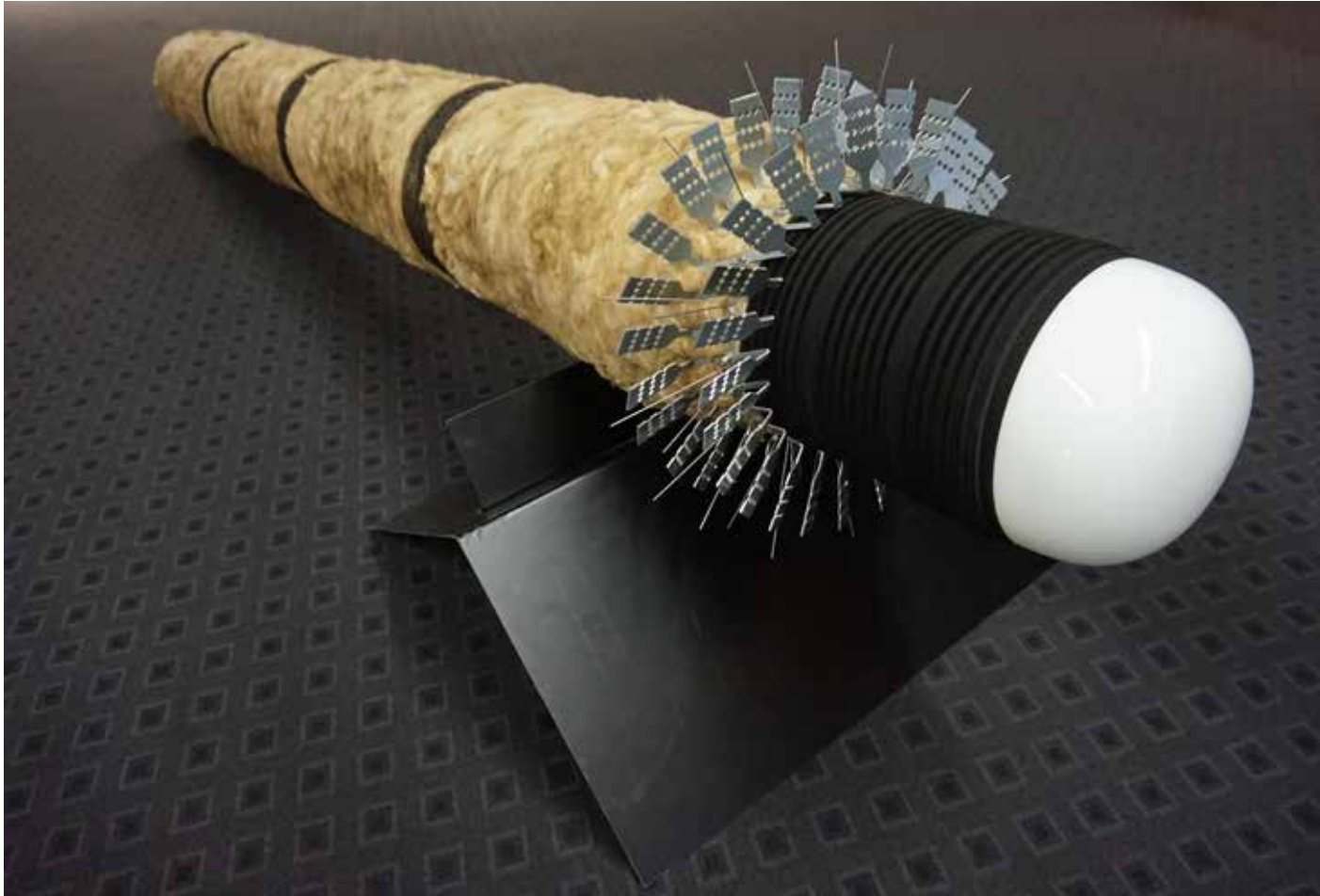
As a genetic code in a precarious balance, a message like constellation. One more star(seed) and the message falls apart.



Case for a caresse and a secret, 2004 - metal, chrome, wood, glass, painting, sealant, wax, feathers - 60x45x32 cm



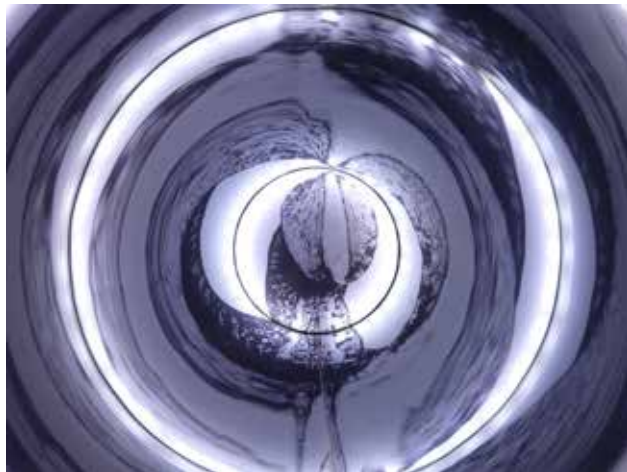
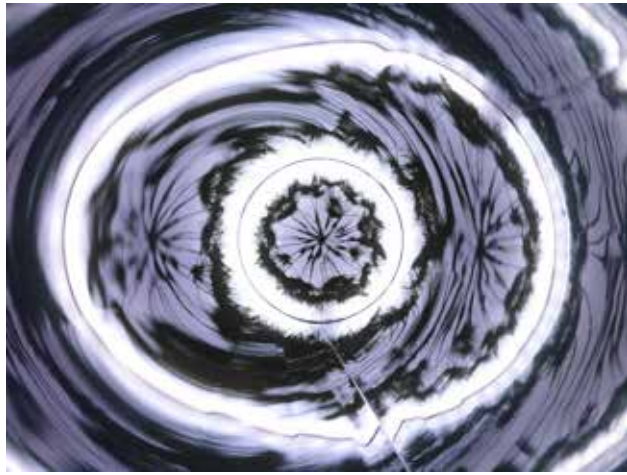
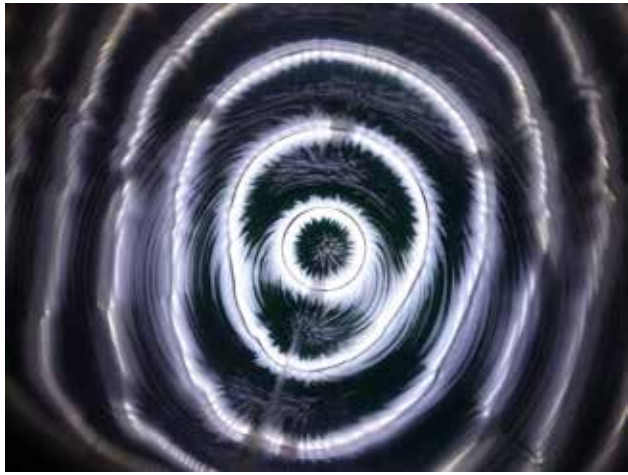
Panachemonamour, 2010 -Venetian blind, altuglass, ball bearing, light pod, signalling post, fabrics, bettle wings - 245x140x295 cm



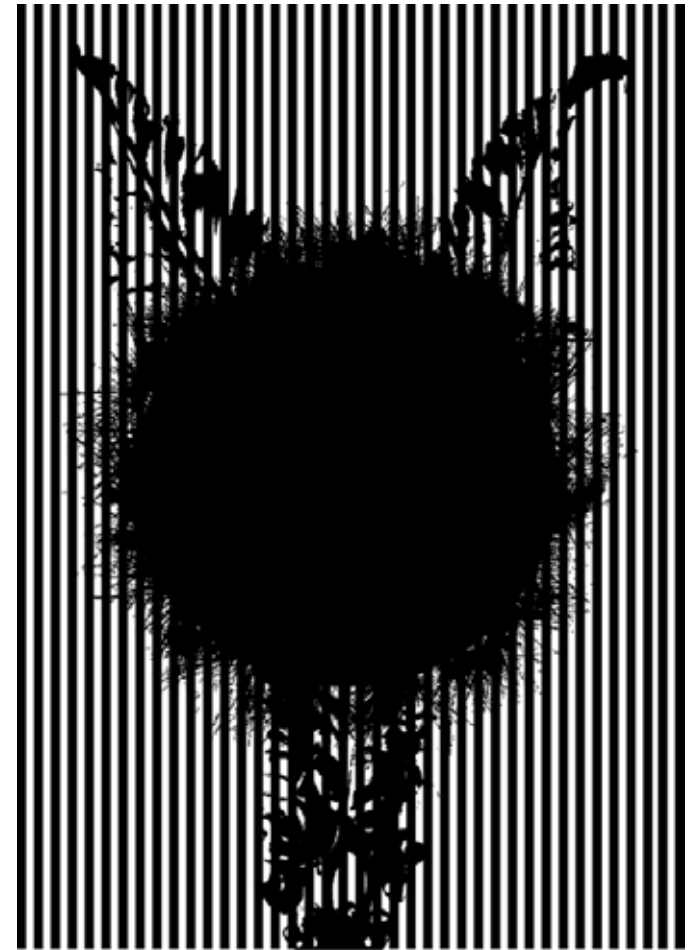
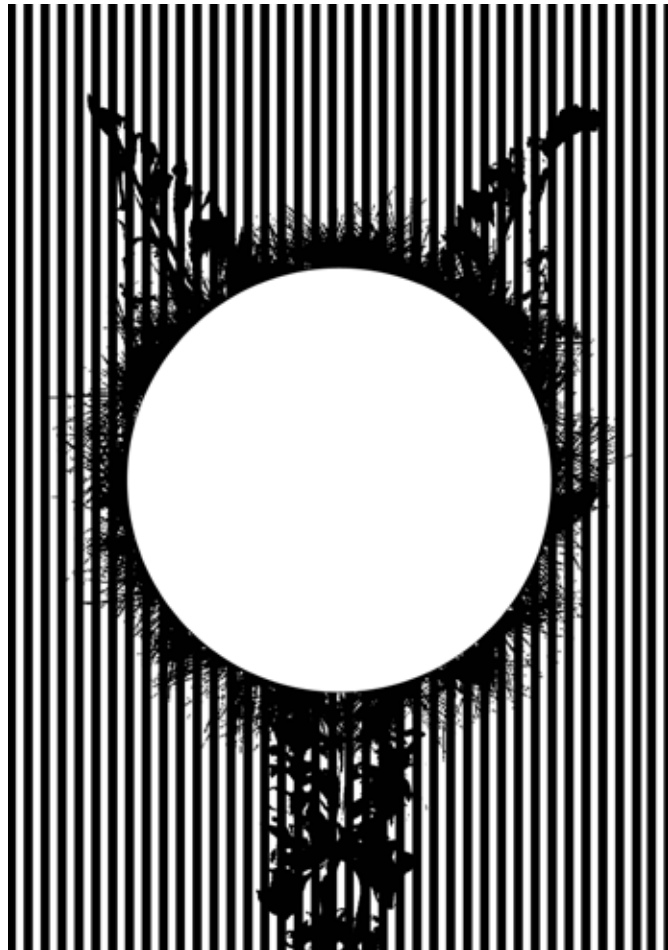
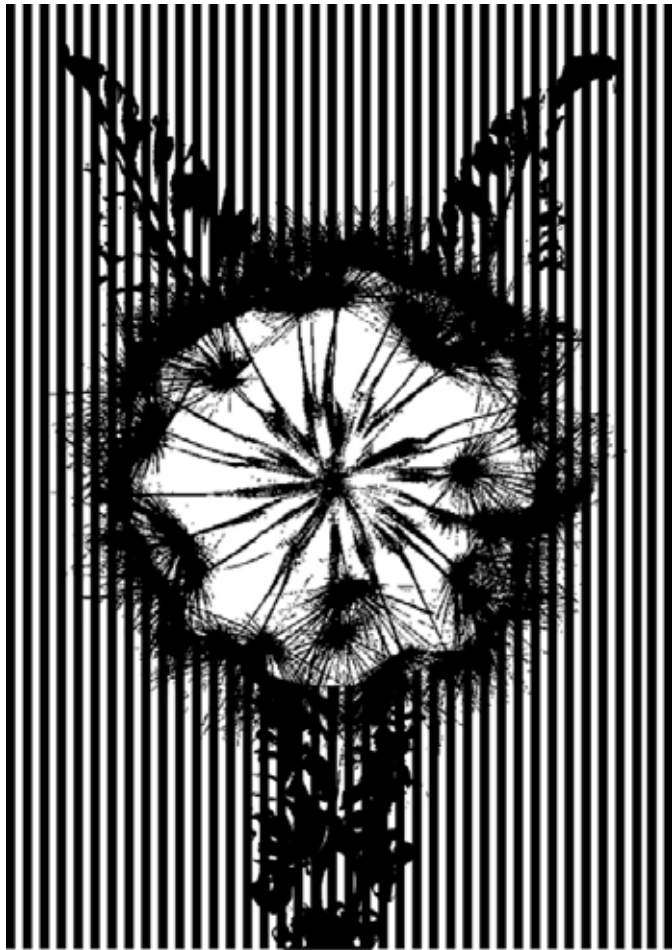
Youpyliser, 2017. Made during a six hours creation residency at Station Servicesz recycling with recycled materials and objects.



Beyond, 2015 - chromed tubes, lightning system, drawings printed on glass. Seven diurnal and nocturnal telescopes, 100x16cm each. Private collection.



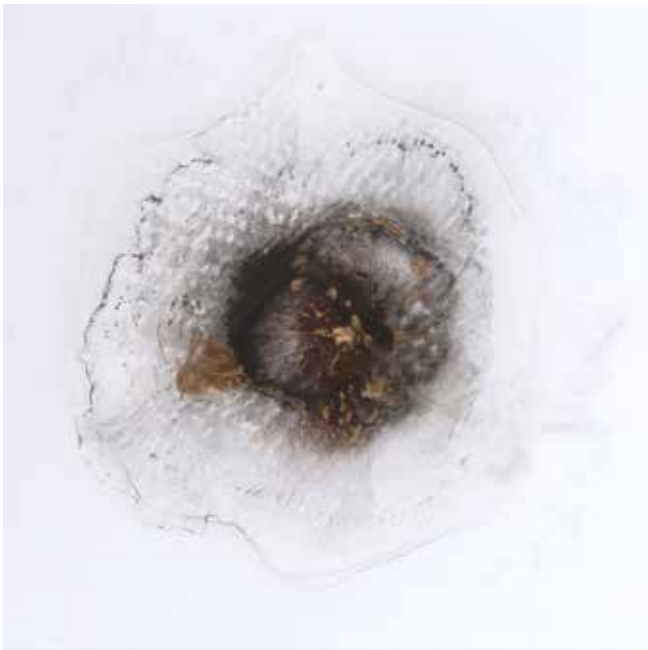
Beyond, 2015 - chromed tubes, lightning system, drawings printed on glass. Seven diurnal and nocturnal telescopes like, 100x16cm each. Private collection.



OV, 2008/2012 -serigraphy on glass or mirrors or building surfaces - Various dimensions.
Graphic studies for architectures and urban furnitures.



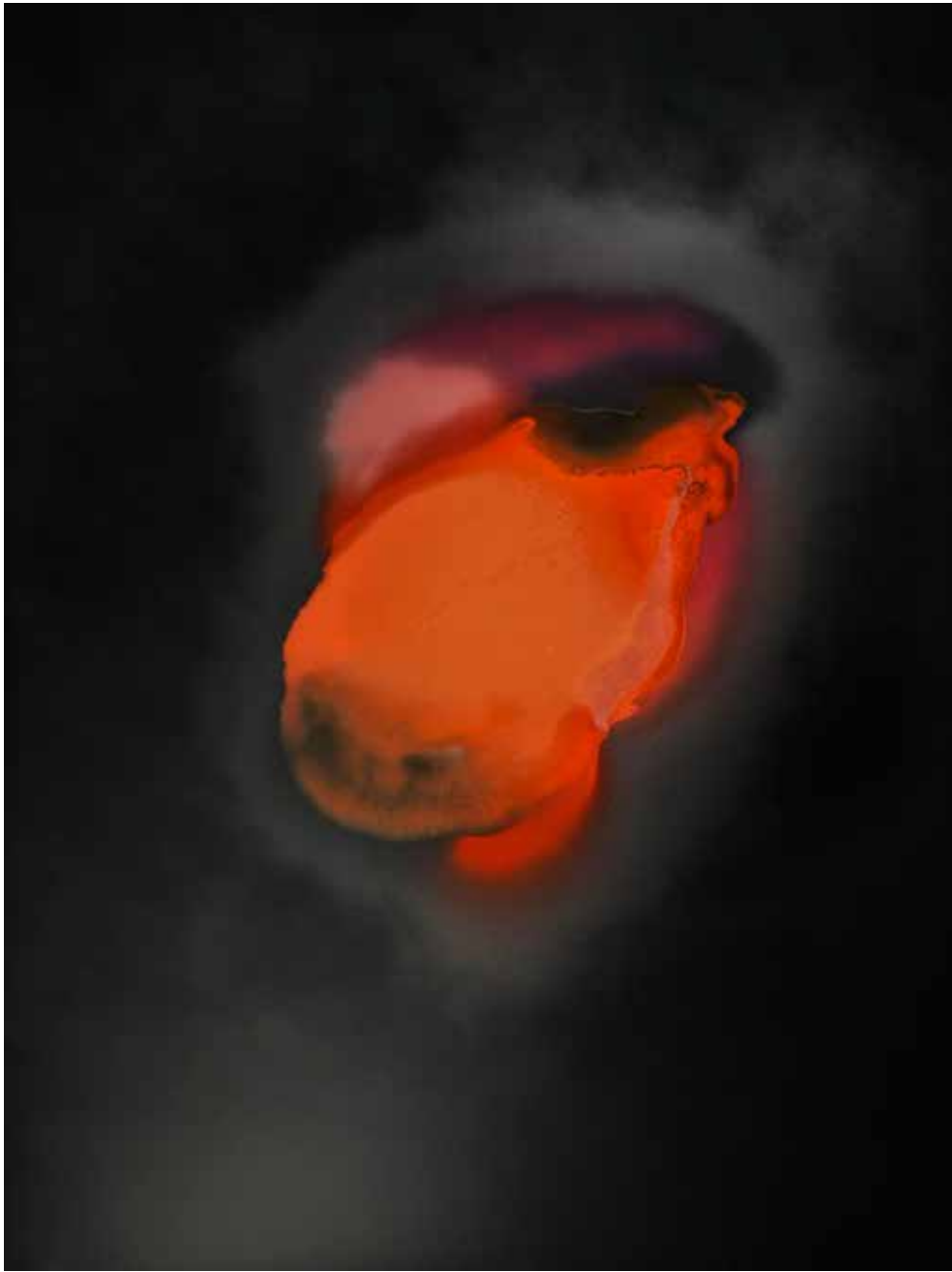
Focalises, 2007 - painting on paper and wood - 59 cm et 128 cm. Permanent Collection of the Natural History -France



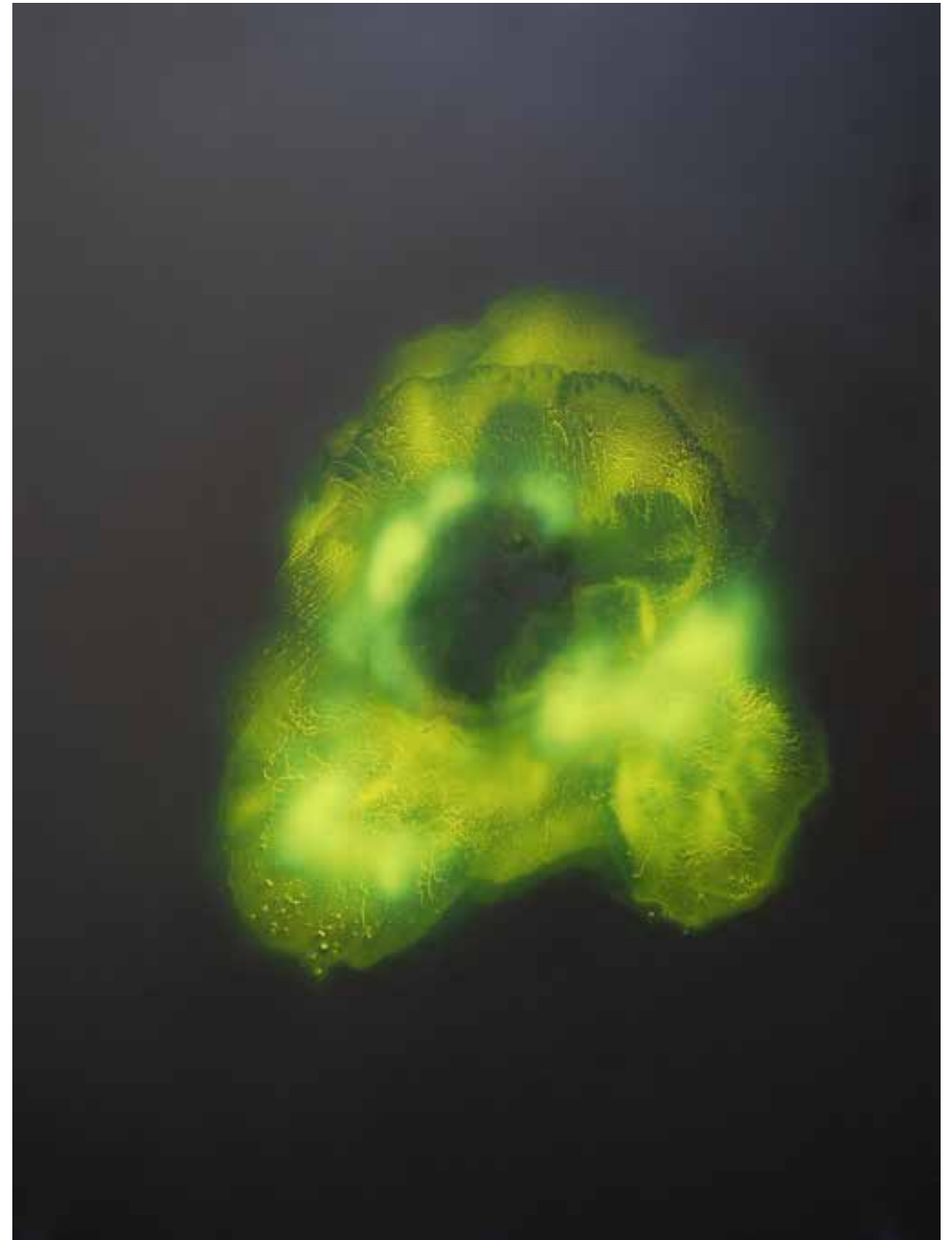
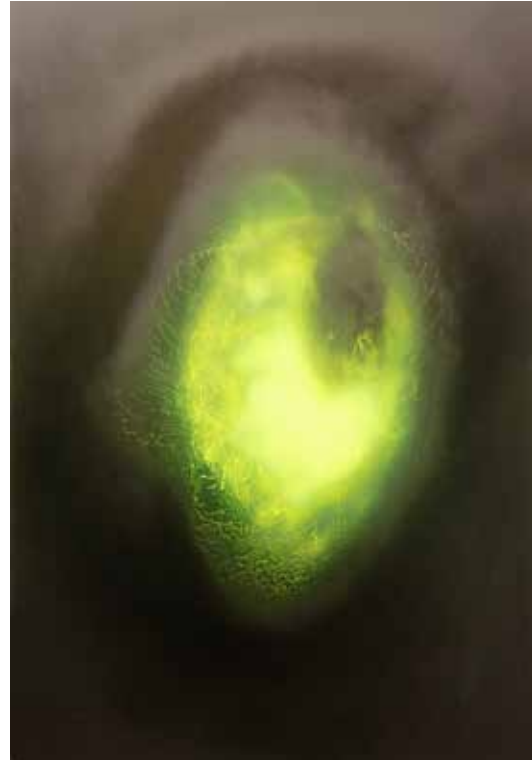
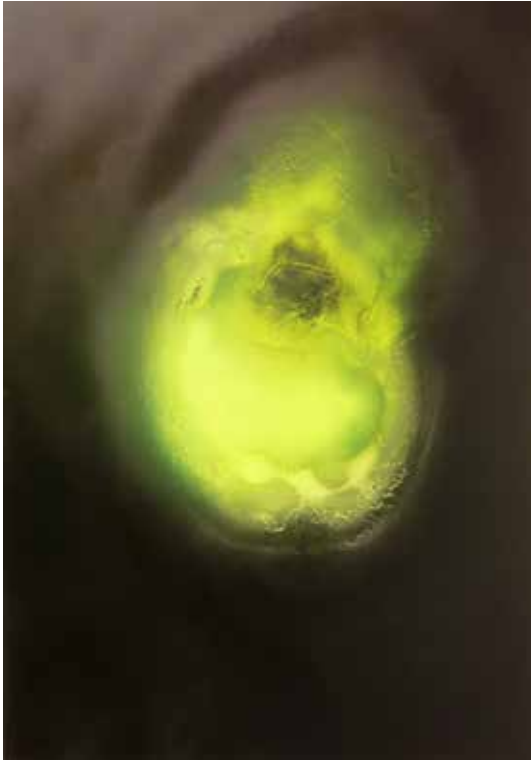
Nymphes, 2010/2014 - painting on paper, 50x50 cm each - Exhibition view, **Caprices** gallery 5 Angers France, 6 from a serie of 42.



Nymphs, 2010/2014 - painting on paper, 50x50 cm each - Exhibition view, **Caprices** gallery 5 Angers France, 6 from a serie of 42.



Haltes en Nymphésie, 2011 - painting on wood, 122x164 cm each.



Haltes en Nymphésie, 2011 - painting on wood, 82x122 cm each and 122x164 cm.



Mascarade Leipzig, 2011, photoprint on dibond - 42x60 cm



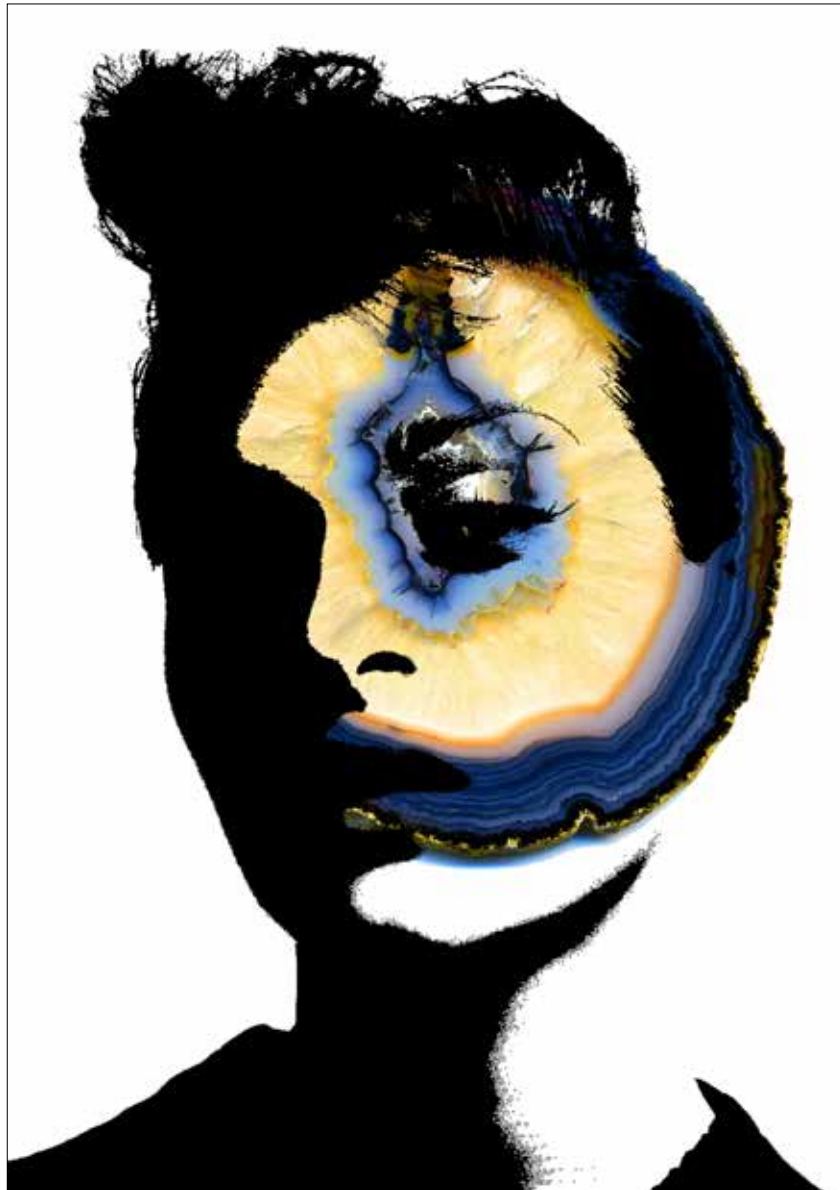
Mascarade Akènes, 2013, photoprint on dibond - 42x60 cm



Mascarade New York, 2012, photoprint on dibond - 21x29,7 cm



Mascarade Corsis, 2015, photoprint on dibond - 42x60 cm



Parade, 2006 - digital print, various dimensions / Armoirdoirie, 2009 - painting on paper - 50x70 cm